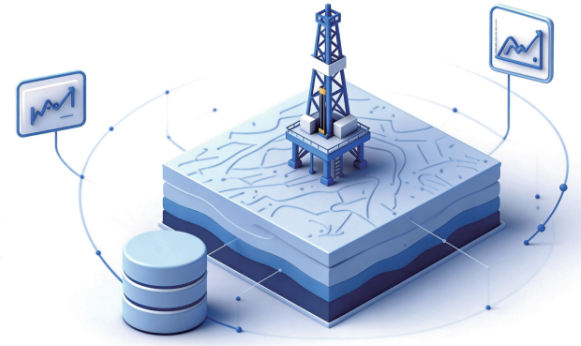


# GeoMap Geospatial Product Family




## Oil & Gas Exploration and Development Mapping & Intelligent Visualization Platform

From desktop mapping to web mapping and AI mapping, building a new capability of integrated maps and data






The GeoMap product family is a comprehensive solution for full-scenario geospatial production and intelligent visualization in the oil & gas industry. It is not just a mapping toolset, but a complete product suite covering desktop mapping, web mapping and AI-powered mapping, supporting oil & gas enterprises to fully upgrade from traditional mapping to intelligent and data-driven mapping.



## Three Core Products · Seamless Collaboration

 <b>GeoMap</b> Desktop Mapping Tool <b>Precise Mapping · Professional Publishing</b> <ul style="list-style-type: none"><li>Complex map editing and fine-tuning</li><li>Industry-specific symbols and functions</li><li>High-standard output and publication</li><li>Connect to data sources, use templates + data for mapping</li></ul>	 <b>GeoMapPro</b> Web Mapping Platform <b>Online Mapping · Standard · Efficient</b> <ul style="list-style-type: none"><li>Template + data one-click mapping</li><li>Layer interaction and online editing</li><li>Linked to data sources, real-time updates</li><li>Share and manage mapping deliverables</li></ul>	 <b>GeoMapX</b> AI Mapping Platform <b>Natural Language · AI-powered</b> <ul style="list-style-type: none"><li>Understand business intent from natural language</li><li>AI automatically generates professional maps</li><li>Intelligent editing and style adjustment</li><li>Instant mapping for meetings and discussions</li></ul>
--	---	---

## Why Choose the GeoMap Product Family?

 <b>Higher Efficiency</b> From hours to minutes, significantly improving mapping productivity	 <b>Standard &amp; Unified</b> Standardize maps and symbols, ensure consistent style and quality
 <b>Linked to Data</b> Maps are linked to real-time data, automatically kept up to date	 <b>Collaboration</b> Centralized management of deliverables, instant sharing and coordinated work
 <b>Secure &amp; Controllable</b> Enterprise-grade architecture ensures data security and reliable control	

## Core Business Scenarios

### Instant Maps for Meetings

“One Sentence” to Generate Maps

- Well Location Evaluation
- Dynamic Analysis
- Reserves Review
- Technical Discussions



Experts no longer need to wait for mapping staff to prepare maps. Professional maps can be generated on the spot.

### AI-powered Mapping

From “Select Template” to “Just Tell Your Needs”

- Generate structure map of a well group
- Overlay well trajectories
- Retrieve cross-section between two wells with gamma curves

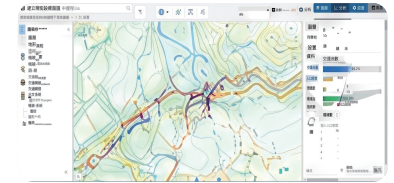


The system automatically completes: Data matching · Map generation · Style configuration

### Online Sharing & Collaboration

Online Sharing & Collaboration

- Web-based viewing
- Layer overlay
- Online annotation
- Data point query
- Map sharing



## Why GeoMapX is Different?



### Not an AI Chat

But Professional Intelligent Mapping



### Not General AI

But Understand Oil & Gas Business



### Not People Find Functions

But Intent to Map



### Not Static Images

But Real-time Maps Linked to Data

## Product Value



### Higher Mapping Efficiency

Instant maps in meetings, from minutes to seconds



### Lower Software Barrier

Experts and managers can use without complex software skills



### Real-time Maps Linked to Data

Avoid data changed but maps not updated



### AI + Web + Desktop Synergy

A complete workflow of AI mapping → online sharing → professional fine-tuning



### Reliable & Secure

Enterprise-grade management ensures safe and controllable data and maps